



Summary (All Time)

/ 81% Post-Contact Score
 / 12,426 All-time Sends
 / 1,421 Responses
 / 11% Response Rate
 / Dataset last updated 1 day ago

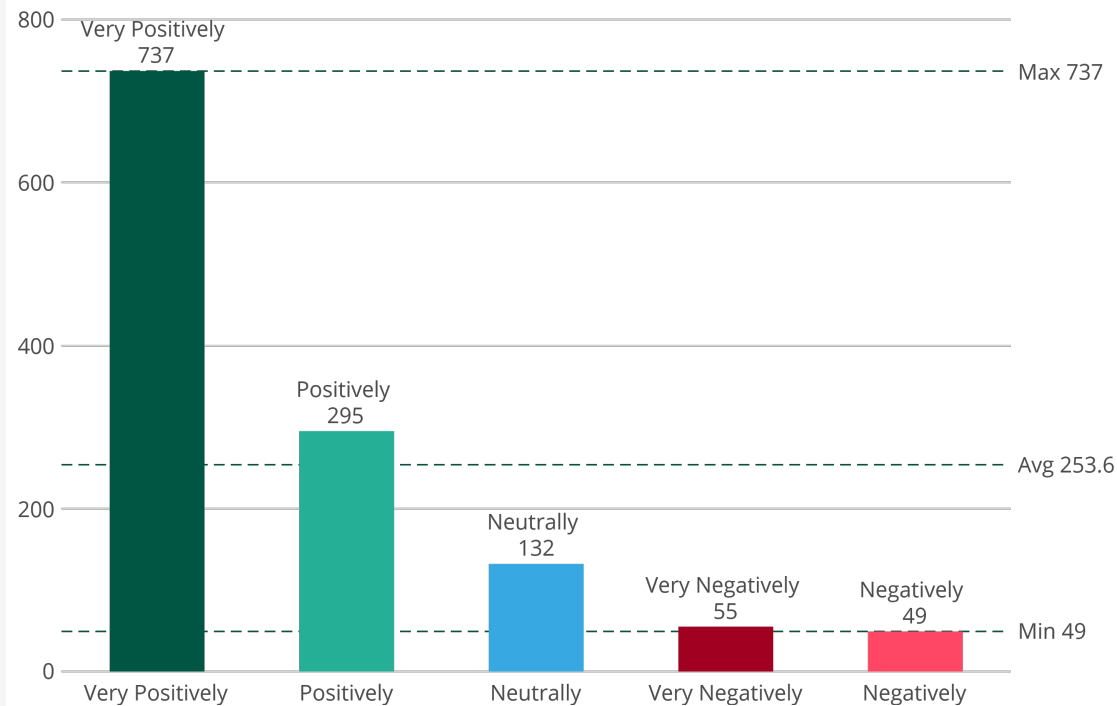
Number of Responses

415

(Last 30 days vs 60 days ago)
 Prior Month 479

↓ -13.36%

Based on your interaction, how do you view Kalamazoo DPS?



BADGES
EARNED



Select Age Group

Select

Select Race/Ethnicity

Select

Select Gender

Select

Select Interaction Type

Select



COMMUNITY SENTIMENT

77% Positive view of agency | ↘ -6% Last 30 Days vs. 60 Days
Prior Month 82%

88% Treated with respect | ↘ -2% Last 30 Days vs. 60 Days
Prior Month 90%

85% Felt they were treated fairly | ↘ -2% Last 30 Days vs. 60 Days
Prior Month 87%

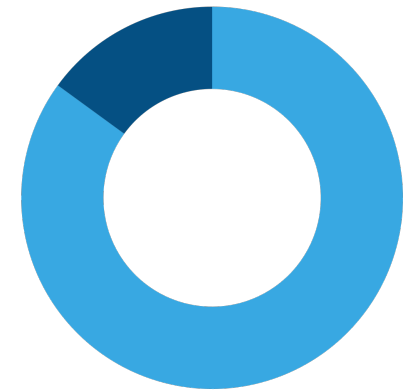
85% Felt they were listened to | ↘ -3% Last 30 Days vs Last 60 Days
Prior Month 88%

88% Understood what they were told | ↘ -1% Last 30 Days vs Last 60 Days
Prior Month 89%

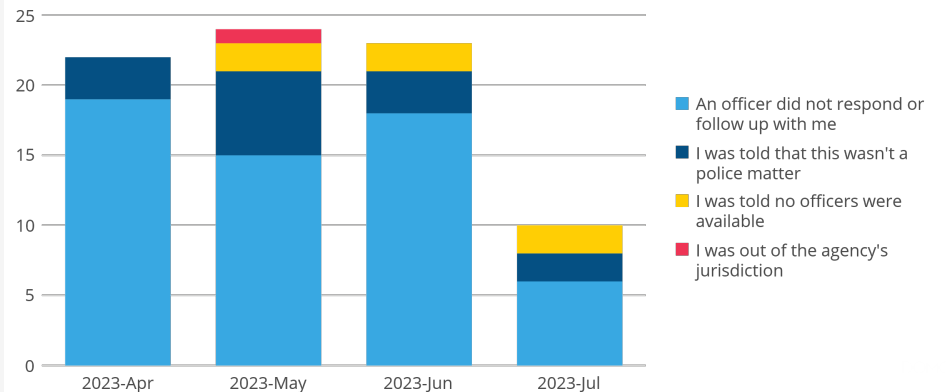
82% had their questions answered | ↗ 1% Last 30 Days vs Last 60 Days
Prior Month 81%

Did you receive the help you needed?

Yes	85.01%
No	14.99%



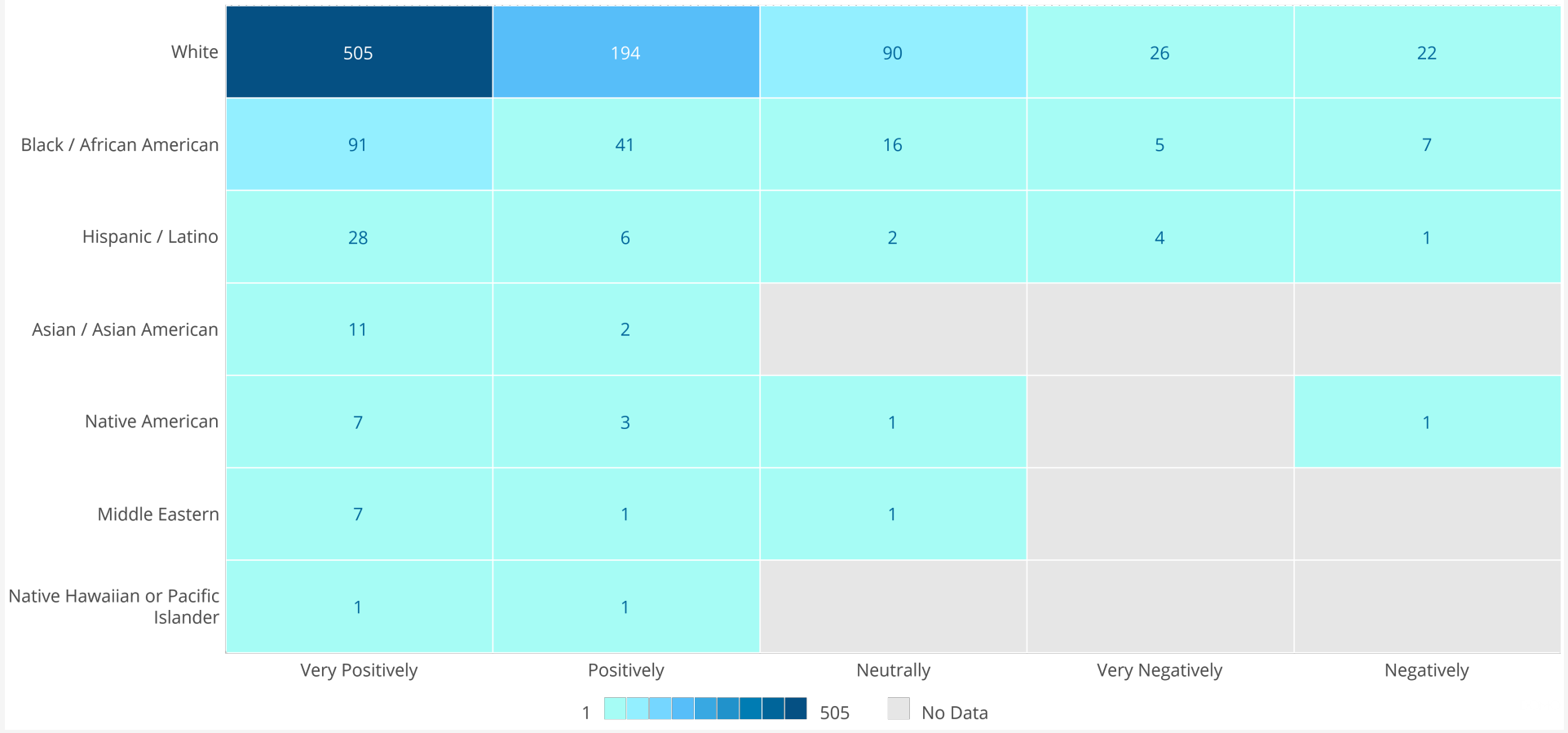
What was the main reason you didn't receive the help you needed?
by Month

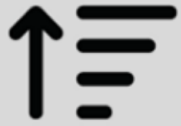




PROCEDURAL JUSTICE

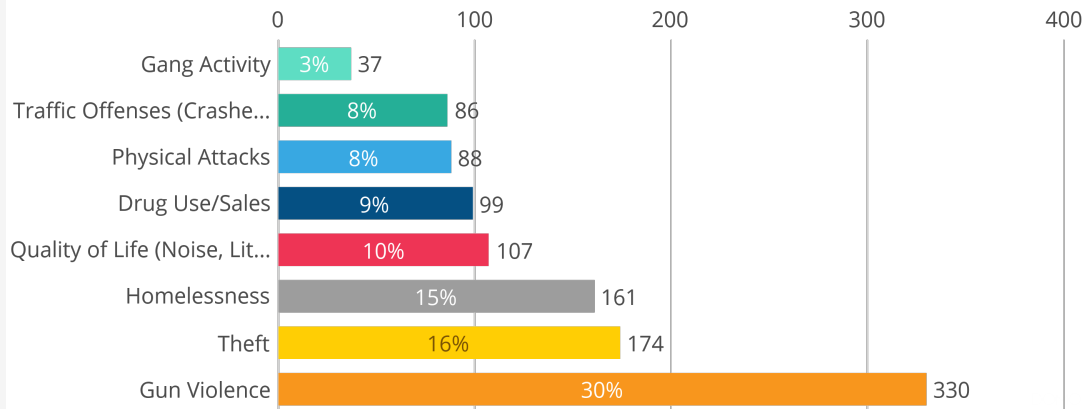
Comparison - View of the agency vs Race/Ethnicity



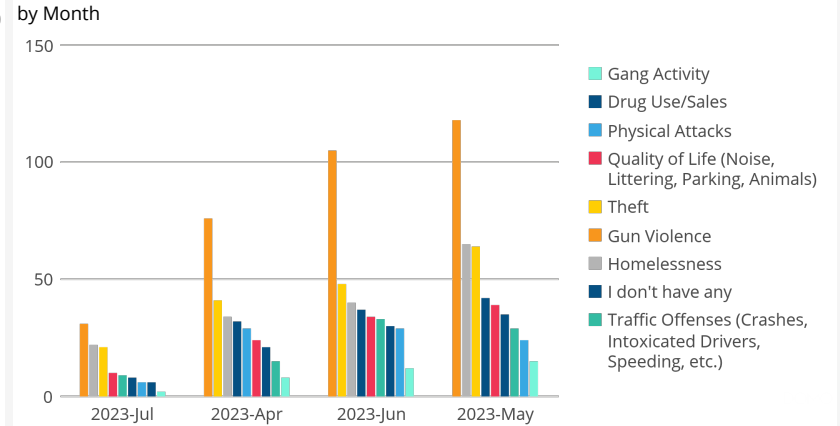


COMMUNITY INPUT ON PUBLIC SAFETY CONCERNS

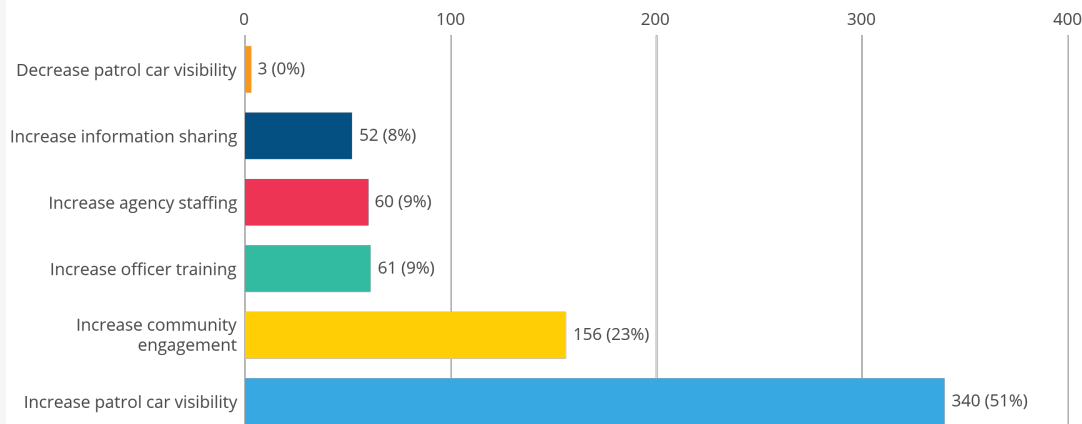
What is your top safety concern in your community?



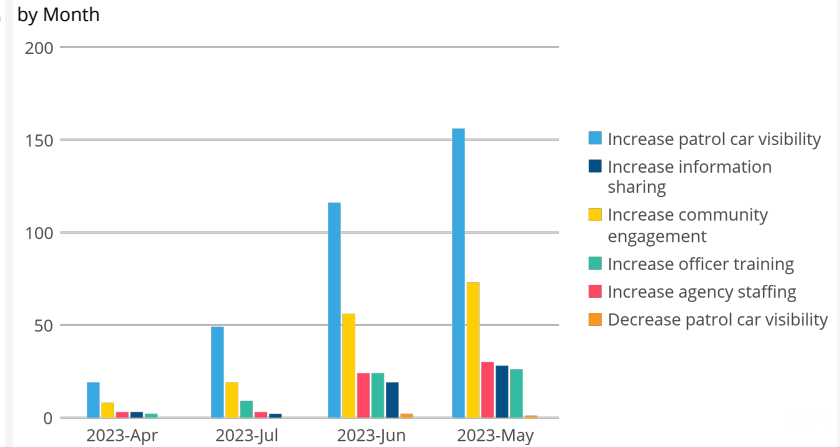
Community Concerns



What would you most like Kalamazoo DPS to do to improve safety in your community?



Community Requests

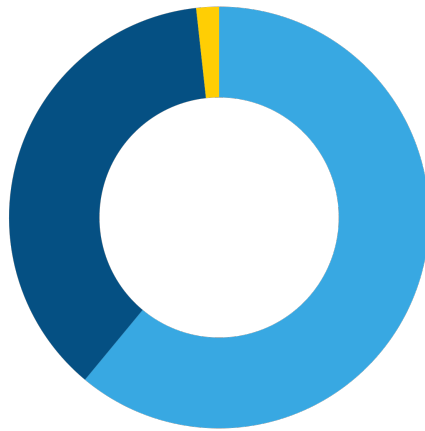




DEMOGRAPHICS

What best describes your gender?

Female	559	61.0%
Male	341	37.2%
Nonbinary / third gender	16	1.75%



What is your age range?

46-60	283
61+	234
36-45	171
28-35	122
21-27	96
18-20	15
Under 18	6



What best describes your race/ethnicity?

